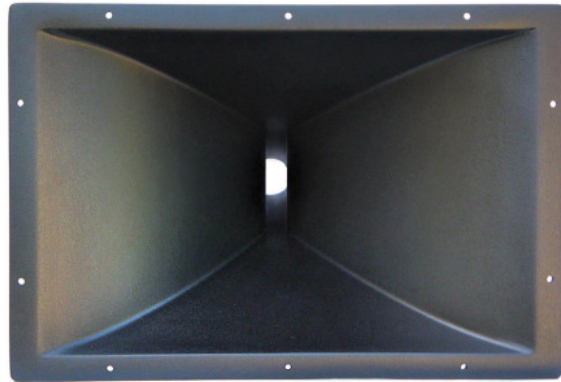


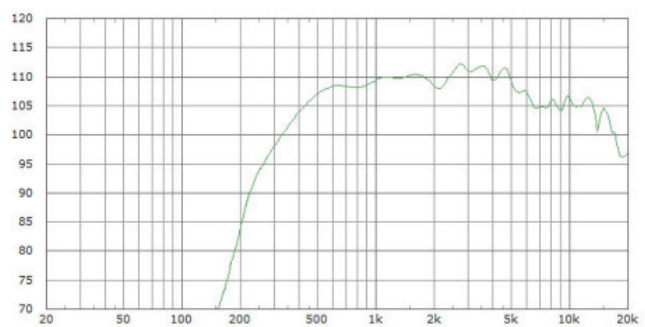


292

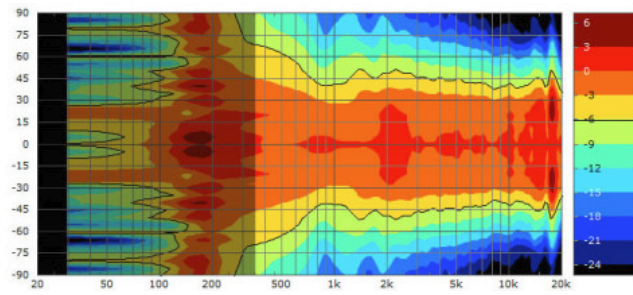


90° x 45° constant directivity horn

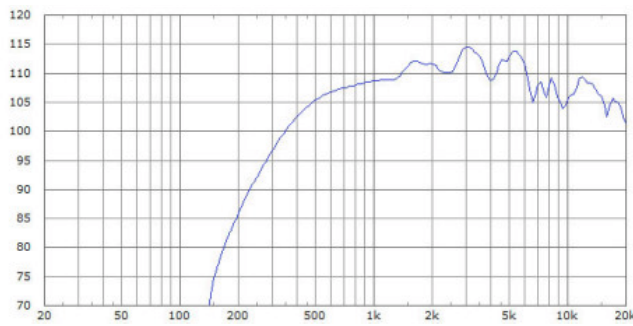
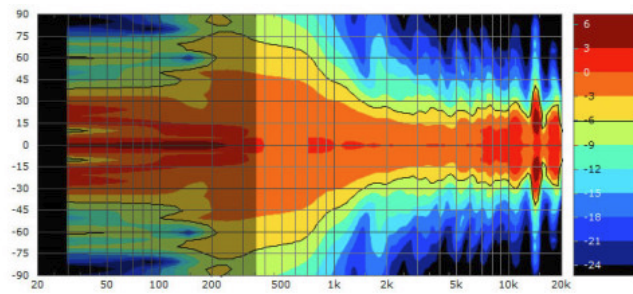
bandwidth	500 - 20000 Hz
w x h x d	47 x 32 x 32 cm 18" x 12" x 12"
weight	circa 2,1 kg
material	Fiberglass
throat Ø	1,4"; 1,5" or 2"



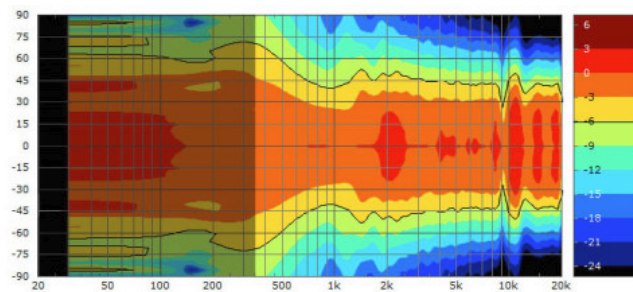
B&C DE920 1W 1m



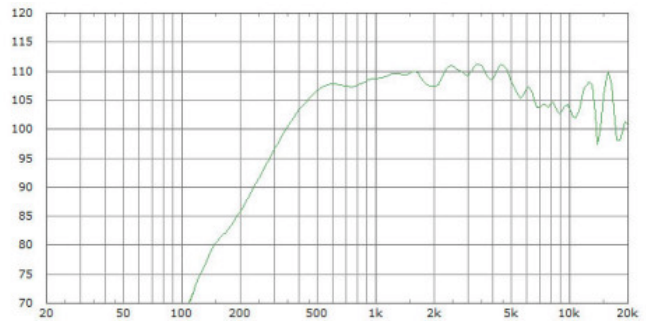
DE 920 horizontal
and vertical



B&C DCX345 1W 1m

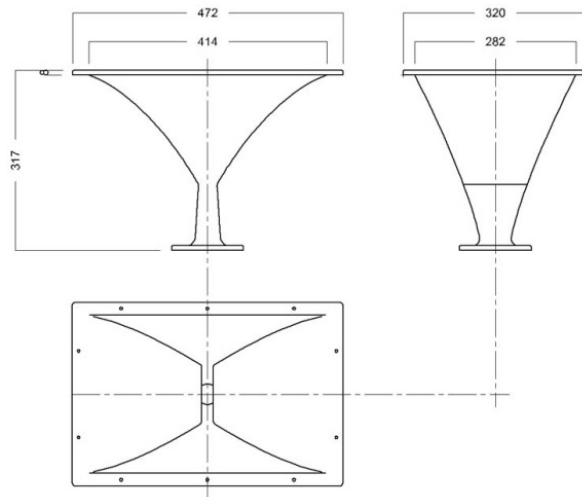


DCX345 horizontal



B&C DE900 1W 1m

all measurements 0,1 octave smoothed



220923

 [Druckversion](#) | [Sitemap](#)

[Login](#)