

6CXN36 8 Ω

- 8 ohm LF unit, 16 ohm HF unit
- 200 W continuous program power capacity
- 90° nominal coverage
- 90 - 18000 Hz response
- 90 dB sensitivity
- Aluminium demodulating ring for very low distortion

Unique to B&C, a complete lineup of high sensitivity and power handling 4", 5" and 6.5" frame transducers. These high technology products are made with our famously critical quality control, allowing new compact loudspeaker designs with appropriately scaled performance. Combined with a 1.4" dome compression driver, our 6CXN36 coaxial is one of the most compact and cost effective full range transducers that we have ever built, offering 90 - 18000Hz frequency response and a 90° conical coverage pattern.



6CXN36 8 Ω

GENERAL

Nominal Diameter	165 mm (6.5 in)
Nominal Impedance	8 Ω
Frequency Range	90 Hz - 18000 Hz
Dispersion Angle	90 °
Included by -6 dB down points.	

PARAMETERS

Fs	90 Hz
Re	5.8 Ω
Qes	1.17
Qms	5
Qts	0.95
Vas	7.5 dm³ (0.26 ft³)
Sd	132 cm² (20.46 in²)
η0	0.45 %
Xvar	5 mm
Mms	10.2 g
Bl	5.34 Tm
Le	0.94 mH
EBP	77 Hz

SPECIFICATIONS HF UNIT

Nominal Diameter	165 mm (6.5 in)
Nominal Impedance	16 Ω
Minimum Impedance	10.2 Ω
Nominal Power Handling	25 W
2 hour test made with continuous pink noise signal within the range from the recommended crossover frequency to 20 kHz. Power calculated on rated minimum impedance. Loudspeaker in free air.	
Continuous Power Handling	50 W
Power on Continuous Program is defined as 3 dB greater than the Nominal rating.	
Sensitivity	100 dB
Applied RMS Voltage is set to 4V	
Recommended Crossover	2 kHz
12 dB/oct. or higher slope high-pass filter.	
Voice Coil Diameter	36 mm (1.4 in)
Winding Material	Aluminium
Inductance	0.14 mH
Flux Density	1.65 T
Diaphragm Material	HT Polymer

SPECIFICATIONS LF UNIT

Nominal Diameter	165 mm (6.5 in)
Nominal Impedance	8 Ω
Minimum Impedance	6.8 Ω
Nominal Power Handling	100 W
2 hours test made with continuous pink noise signal within the range Fs-10Fs. Power calculated on rated minimum impedance. Loudspeaker in free air.	
Continuous Power Handling	200 W
Power on Continuous Program is defined as 3 dB greater than the Nominal rating.	
Sensitivity	90 dB
Applied RMS Voltage is set to 2.83V.	
Voice Coil Diameter	34 mm (1.3 in)
Winding Material	Copper
Former Material	Glass Fibre
Winding Depth	11 mm (0.43 in)
Magnetic Gap Depth	6 mm (0.24 in)
Flux Density	0.74 T
Woofer Cone Treatment	WP Waterproof Front Side

DESIGN

Magnet Material	Neodymium Ring
Woofer Cone Treatment	WP Waterproof Front Side

MOUNTING AND SHIPPING INFO

Overall Diameter	180 mm (7.09 in)
Bolt Circle Diameter	165 mm (6.5 in)
Baffle Cutout Diameter	146 mm (5.75 in)
Depth	91 mm (3.58 in)
Flange and Gasket Thickness	6 mm (0.25 in)
Net Weight	0.7 kg (1.54 lb)
Shipping Units	1 pcs
Shipping Weight	1.15 kg (2.54 lb)
Shipping Box	255x255x150 mm (10.04x10.04x5.91 in)

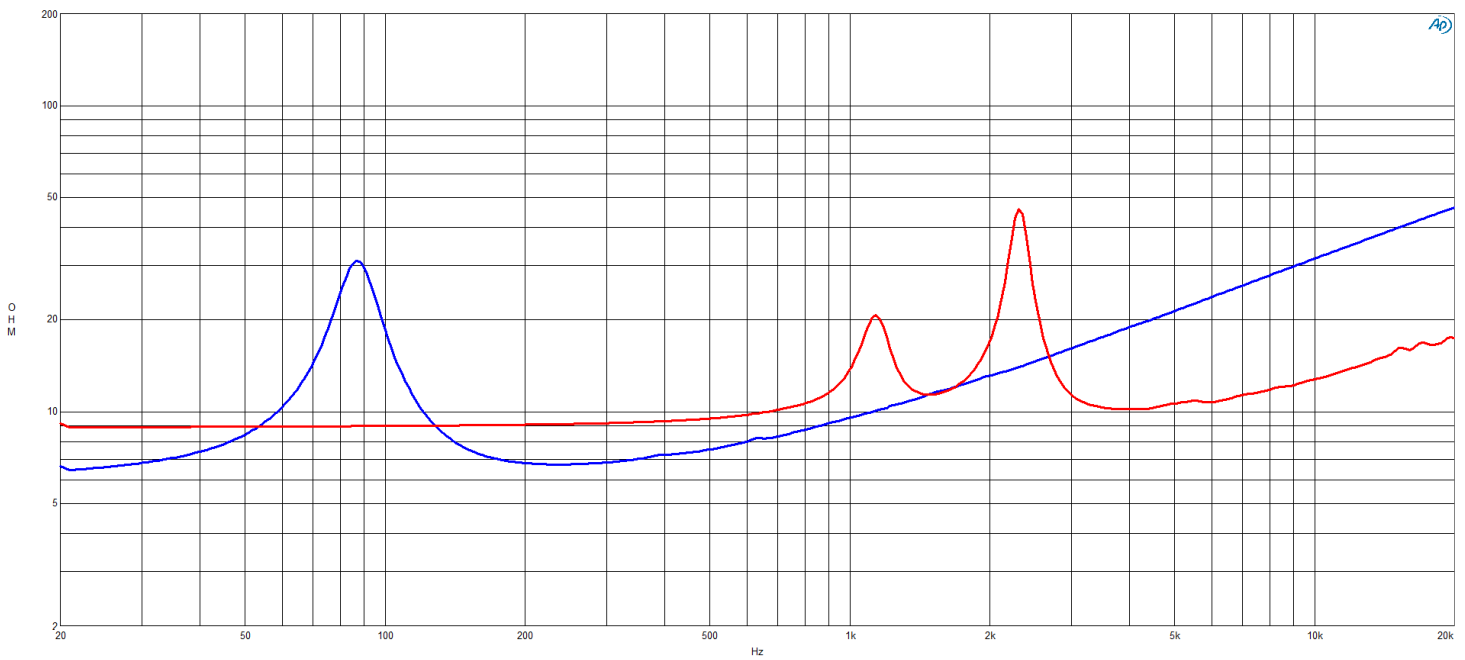
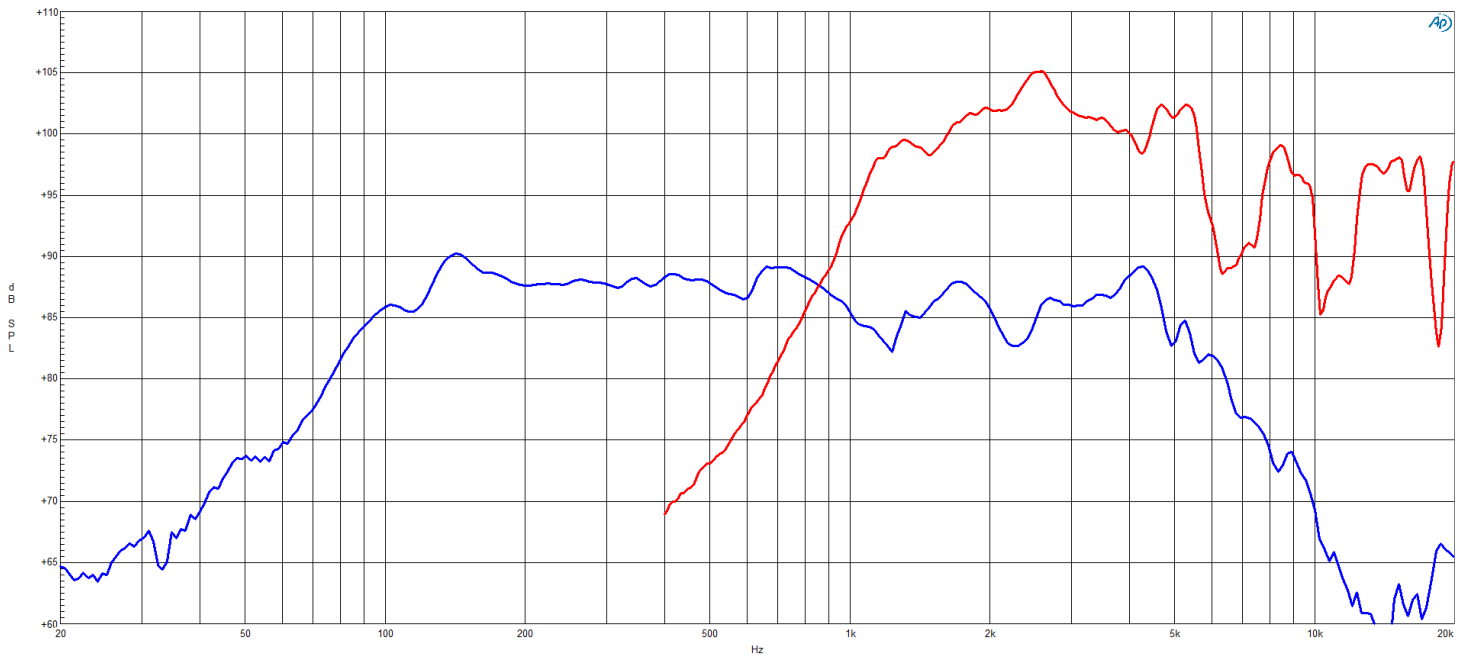
CROSSOVER

FBCXN36	8 Ω
---------	------------

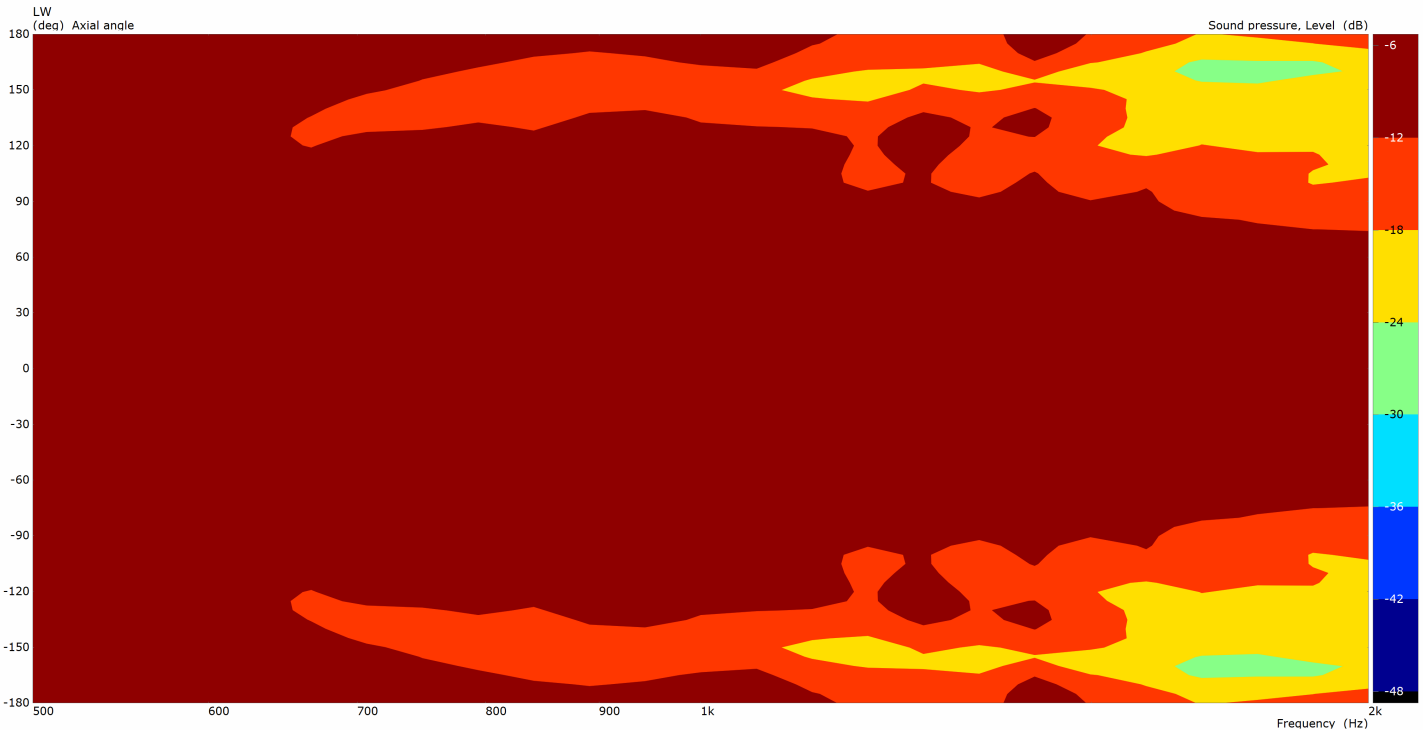
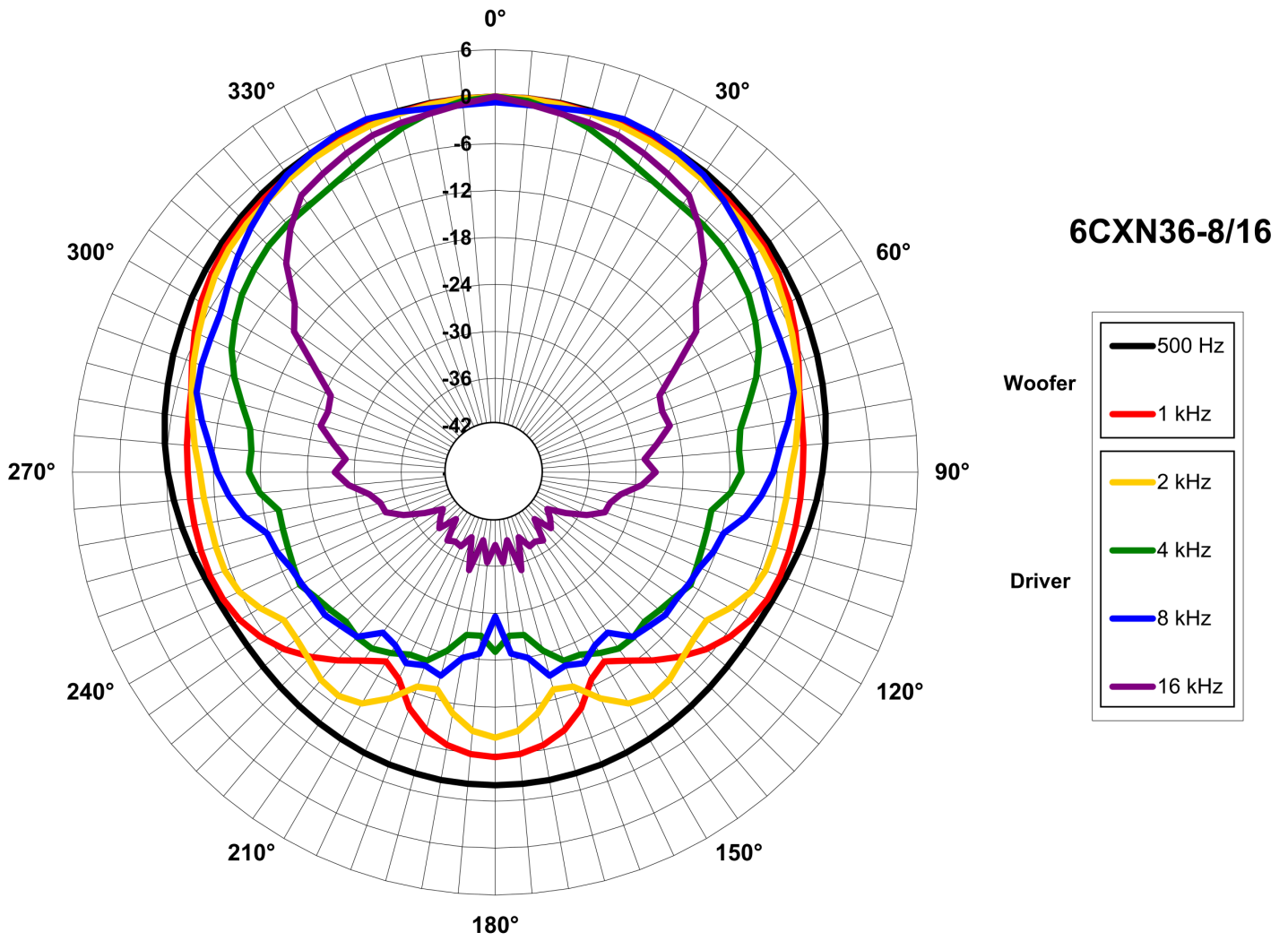
SERVICE KITS

HF replacement-diaphragm	MMDDE11016
LF recone-kits	RCK006CXN368

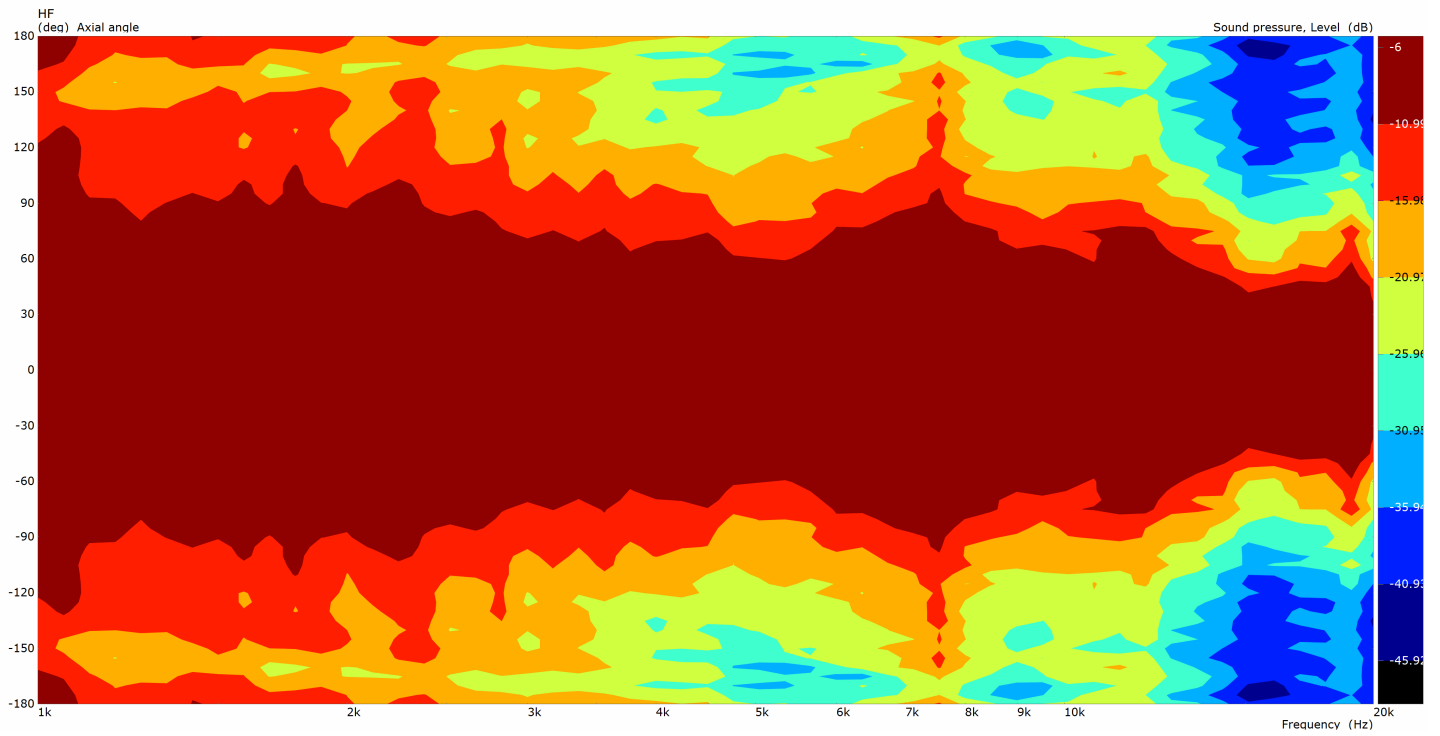
6CXN36 8 Ω



6CXN36 8 Ω



6CXN36 8 Ω



6CXN36 8 Ω

