

8CXN51 8 Ω

- 500 W continuous program power capacity
- 100° nominal coverage
- 70 - 18000 Hz response
- 97 dB sensitivity
- Single Neodymium magnet assembly



8CXN51 8 Ω

GENERAL

Nominal Diameter	210 mm (8 in)
Nominal Impedance	8 Ω
Frequency Range	70 Hz - 18000 Hz
Dispersion Angle	100 °
Included by -6 dB down points.	

PARAMETERS

Fs	68 Hz
Re	4.9 Ω
Qes	0.29
Qms	4.7
Qts	0.27
Vas	17 dm³ (0.6 ft³)
Sd	220 cm² (34.1 in²)
η0	1.8 %
Xvar	6 mm
Mms	22 g
Bl	12.6 Tm
Le	0.9 mH
EBP	234 Hz

SPECIFICATIONS HF UNIT

Nominal Diameter	210 mm (8 in)
Nominal Impedance	8 Ω
Minimum Impedance	7.4 Ω
Nominal Power Handling	50 W
2 hour test made with continuous pink noise signal within the range from the recommended crossover frequency to 20 kHz. Power calculated on rated minimum impedance. Loudspeaker in free air.	
Continuous Power Handling	100 W
Power on Continuous Program is defined as 3 dB greater than the Nominal rating.	
Sensitivity	104 dB
Applied RMS Voltage is set to 2.83V.	
Recommended Crossover	1.8 kHz
12 dB/oct. or higher slope high-pass filter.	
Voice Coil Diameter	44 mm (1.7 in)
Winding Material	Aluminium
Inductance	0.11 mH
Flux Density	1.8 T
Diaphragm Material	Polyimide

SPECIFICATIONS LF UNIT

Nominal Diameter	210 mm (8 in)
Nominal Impedance	8 Ω
Minimum Impedance	6 Ω
Nominal Power Handling	250 W
2 hours test made with continuous pink noise signal within the range Fs-10Fs. Power calculated on rated minimum impedance. Loudspeaker in free air.	
Continuous Power Handling	500 W
Power on Continuous Program is defined as 3 dB greater than the Nominal rating.	
Sensitivity	97 dB
Applied RMS Voltage is set to 2.83V.	
Voice Coil Diameter	51 mm (2 in)
Winding Material	Aluminium
Former Material	Glass Fibre
Winding Depth	17 mm (0.67 in)
Magnetic Gap Depth	8 mm (0.31 in)
Flux Density	1.15 T
Woofer Cone Treatment	WP Waterproof Front Side

DESIGN

Magnet Material	Neodymium Ring
Woofer Cone Treatment	WP Waterproof Front Side

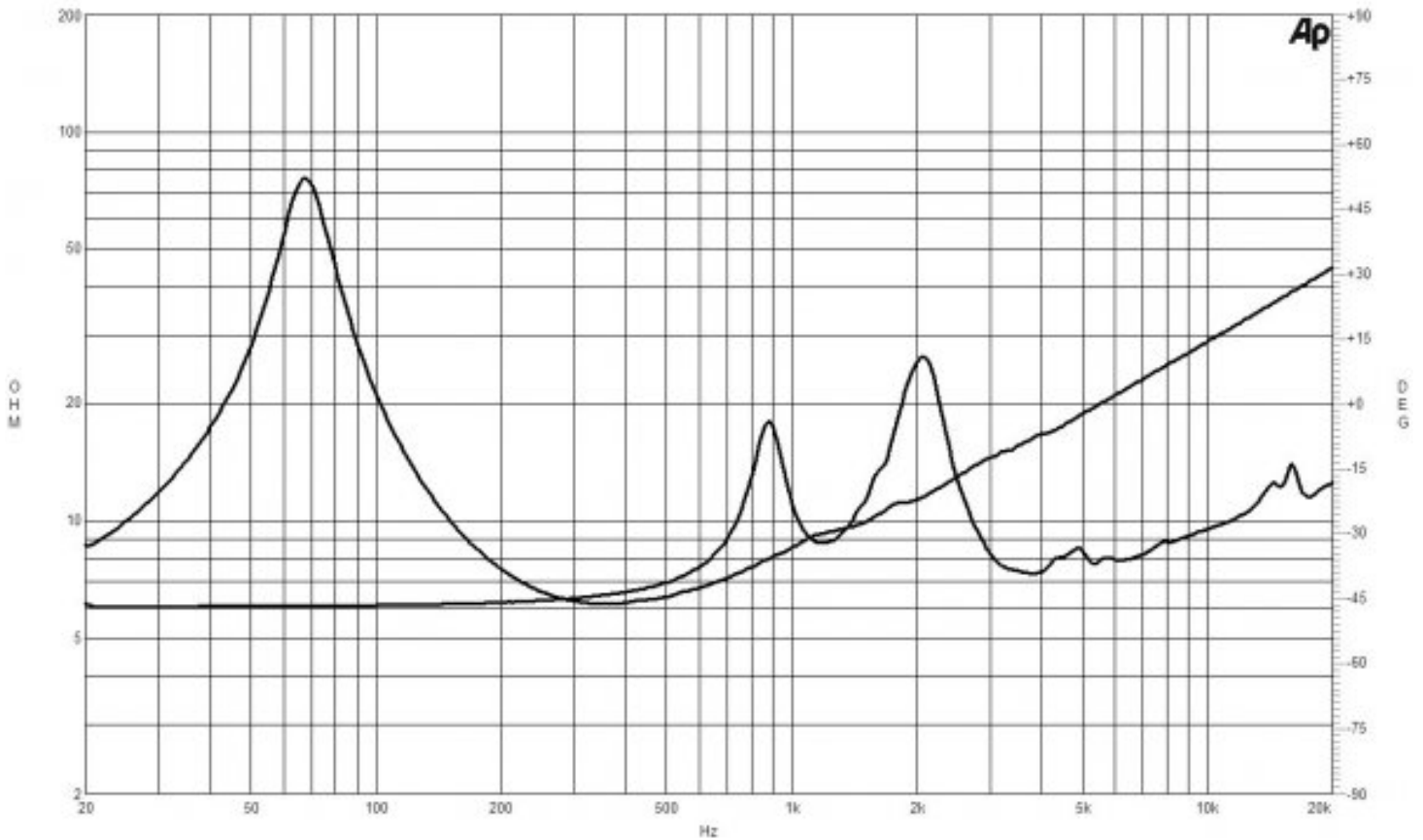
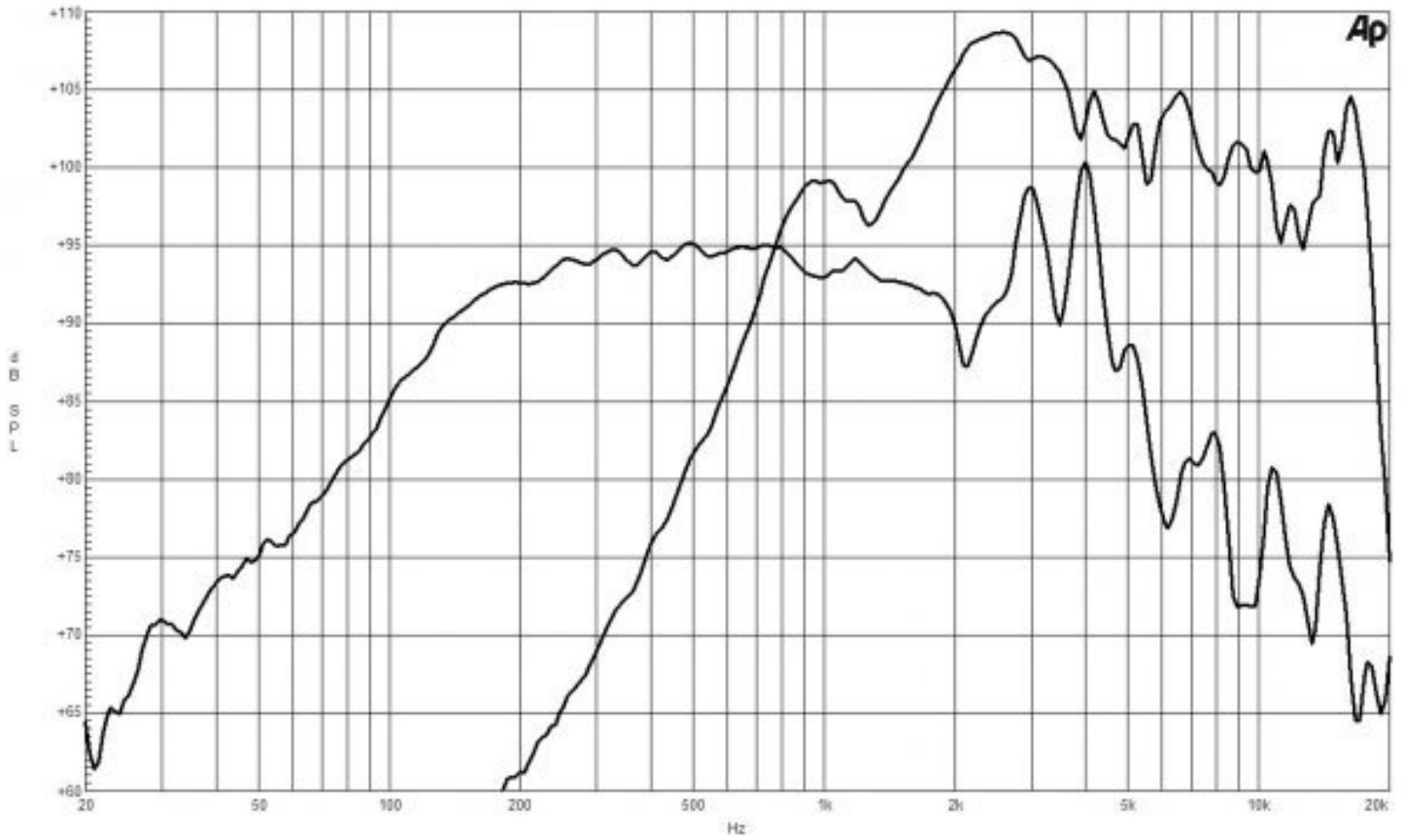
MOUNTING AND SHIPPING INFO

Overall Diameter	225 mm (8.8 in)
Bolt Circle Diameter	210 mm (8.3 in)
Baffle Cutout Diameter	187 mm (7.4 in)
Depth	111 mm (4.4 in)
Flange and Gasket Thickness	10 mm (0.4 in)
Net Weight	2.6 kg (5.73 lb)
Shipping Units	1 pcs
Shipping Weight	3.2 kg (7.05 lb)
Shipping Box	295x314x175 mm (11.61x12.36x6.89 in)

SERVICE KITS

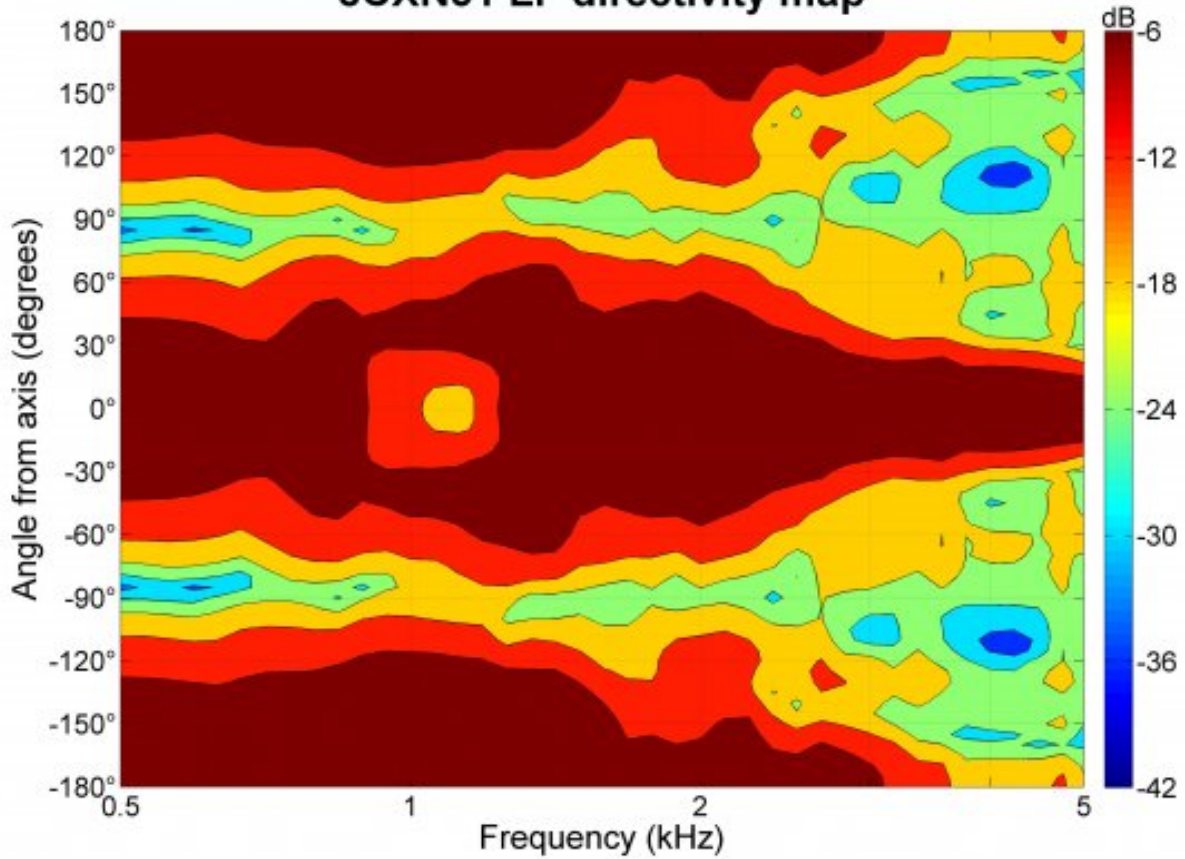
HF replacement-diaphragm	MMD4008
LF recone-kits	RCK008CXN518

8CXN51 8 Ω

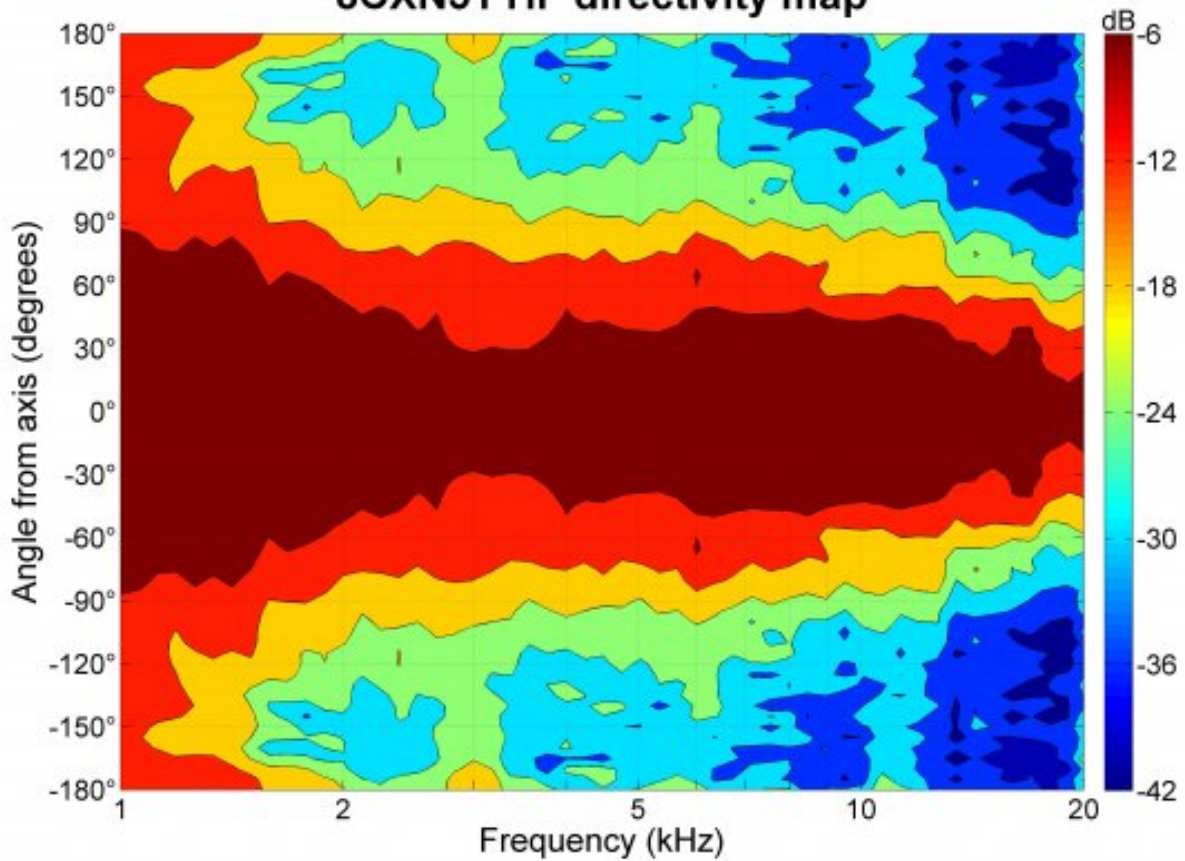


8CXN51 8 Ω

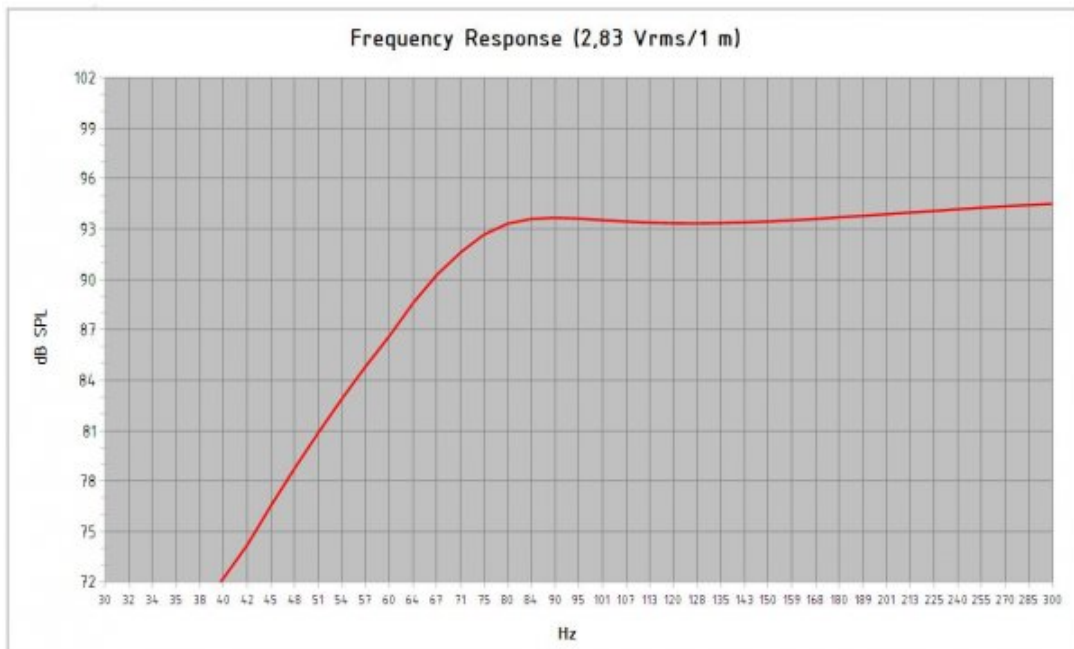
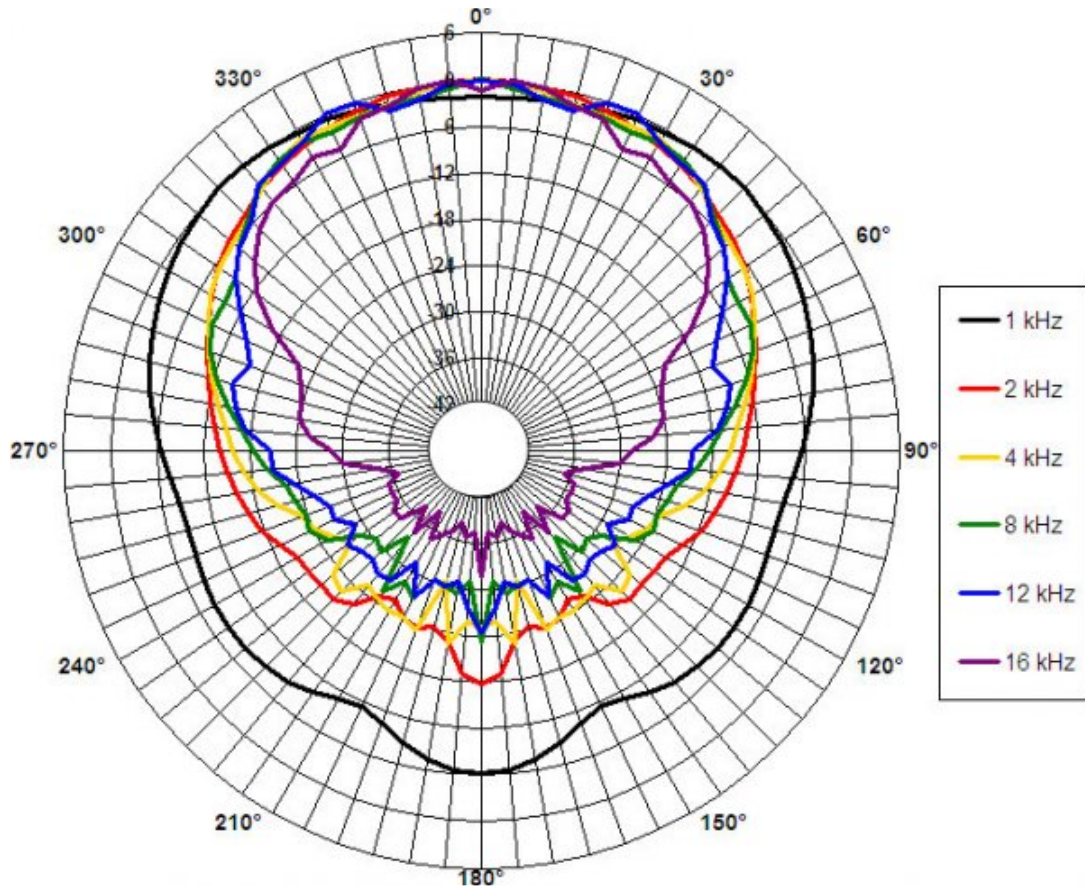
8CXN51 LF directivity map



8CXN51 HF directivity map



8CXN51 8 Ω



Model:	8 CXN 51		
Enclosure Type:	Bass Reflex		
Internal Net Volume (Liters):	15	Port Area (cm ²):	43,0
Tuning Frequency (Hz):	73	Port Length (cm):	9,7
Frequency (-3 dB) (Hz):	73,6		
Excursion Limited Maximum SPL at 1 meter (dB):	114,3 equal to	105,8 Watts	(Bass Band Power Rating)
Thermal Limited Maximum SPL at 1 meter (dB):	118,1 equal to	250,0 Watts	(Mid Band Power Rating)



Professional loudspeaker transducers since 1946

B&C Speakers S.p.A. Via Poggiomoro, 1 - Loc. Vallina, 50012 Bagno a Ripoli (FI) | ITALY
Tel. +39 055 65721 | Fax +39 055 6572312 | mail@bcspeakers.com

8CXN51 8 Ω

