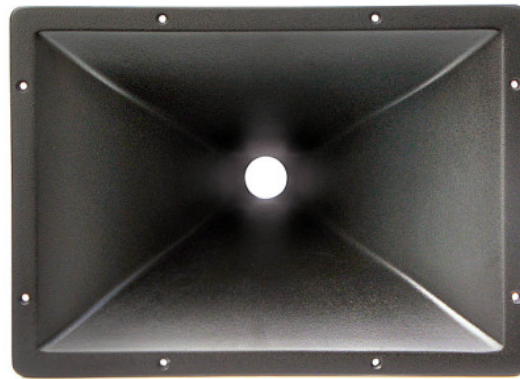
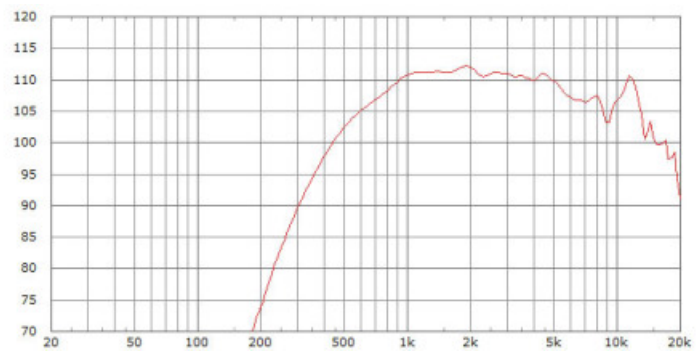


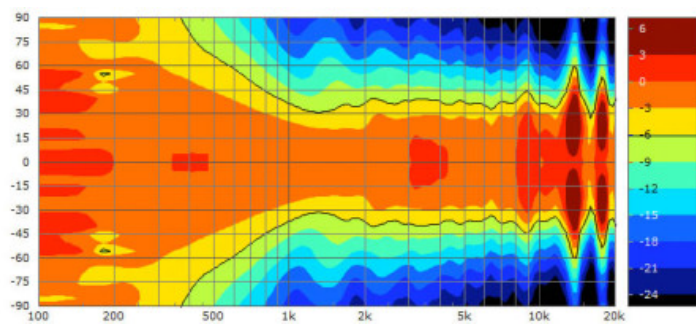
250n



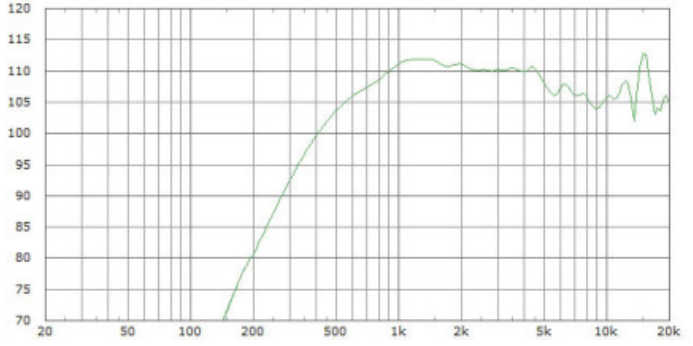
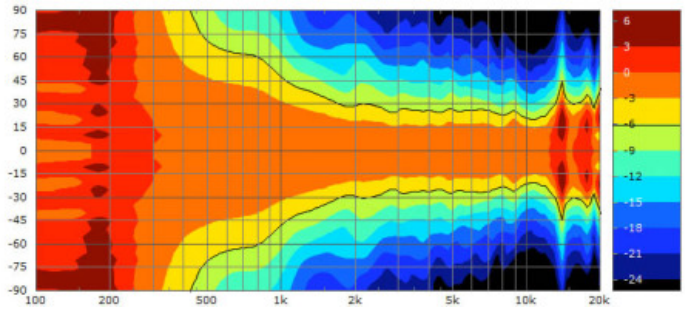
Directivity	70° x 50°
Material	GfK / GRP
throat diameter	1.4"
w x h x d	39 x 28 x 23 cm
weight	circa 1.6 kg



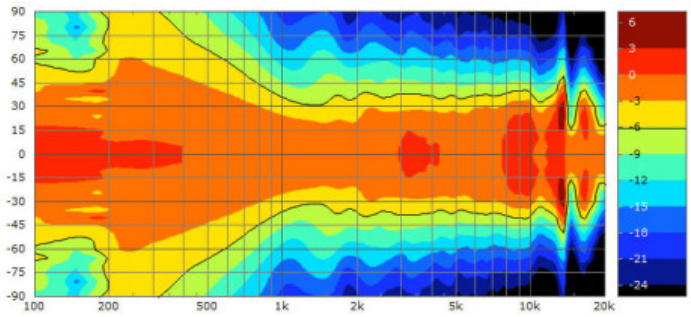
DE 920 1W 1m



Limmerhorns - 250 w, m & n



DE900 1W 1m



DE900 horizontal
different drivers may provide different results above 9 kHz

