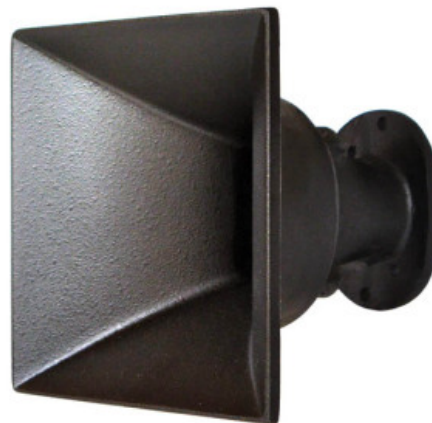


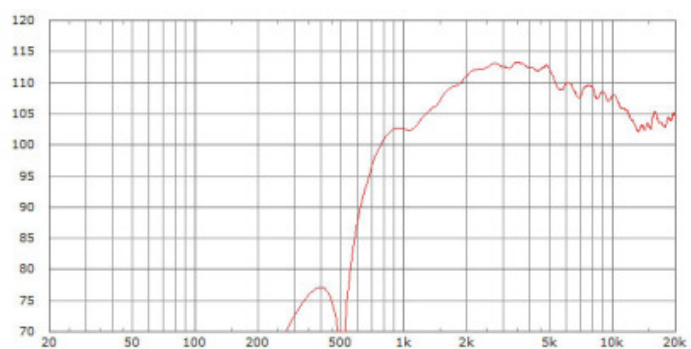


170



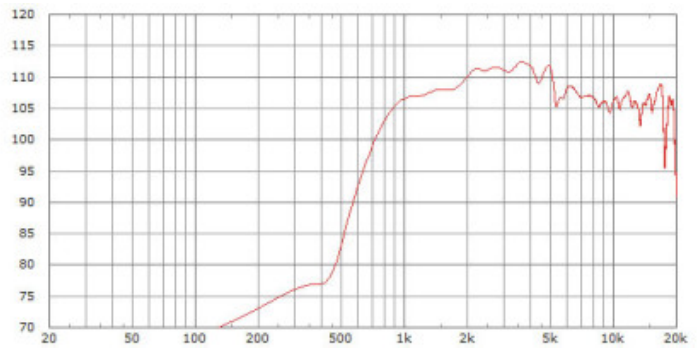
870qx high frequency-horn

Directivity	70° x 40°
Material	PU
w x h x d	156 x 160 x 151 mm
weight	0,5 kg
driver mounting:	two 6,5 mm holes on 76 mm diameter and 2 holes on 57 mm diameter 4 M4 threads for mounting in a tube or 870qx-phase plug

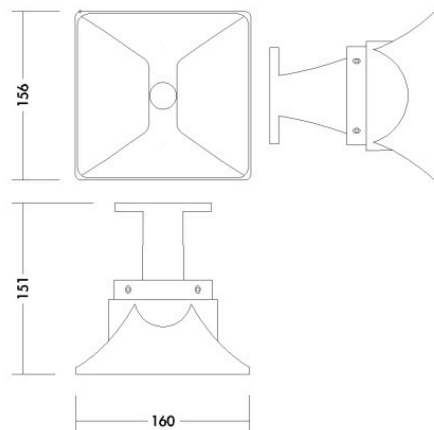
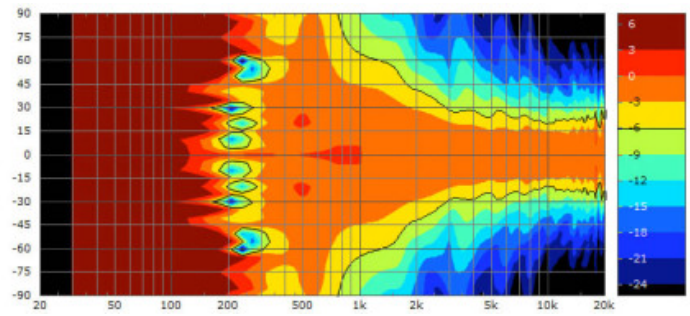
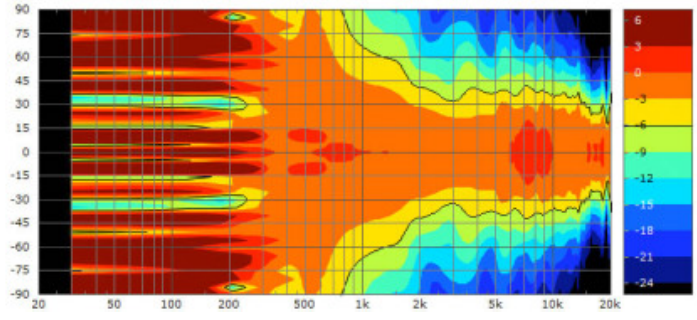



B&C DE360 1W 1m

Limmerhorns - 170



B&C DE550 1W 1m



 [Druckversion](#) | [Sitemap](#)

[Login](#)