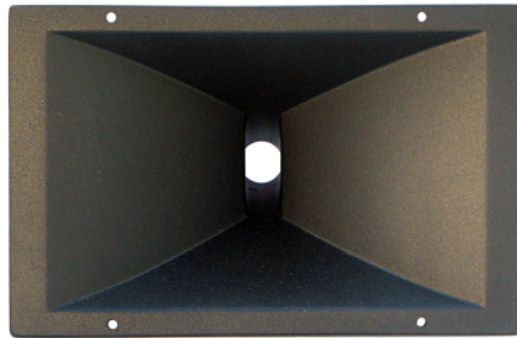


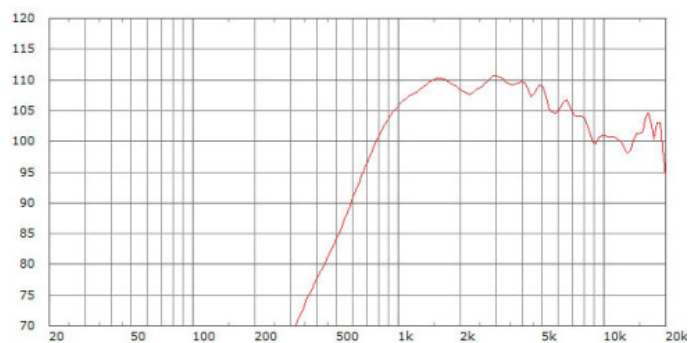


# 1120

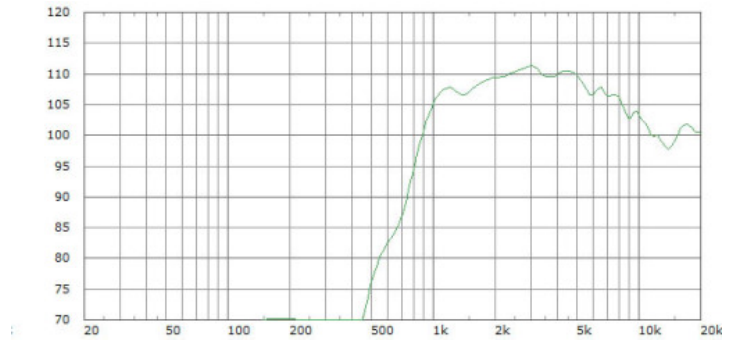


## 1" 120° x 60° constant directivity horn

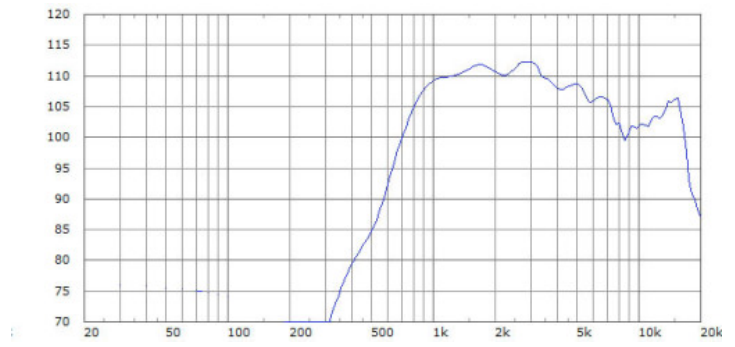
bandwidth	1000 Hz upwards
w x h x d	29 x 19 x 11,6 cm
	11.4" x 7.5" x 4.6"
baffle cutout	230 x 155 mm
weight	0,6 kg
material	PU
throat Ø	1"
driver mounting	two 6.5 mm holes on 76mm Ø
	two 6.5 mm holes on 57mm Ø



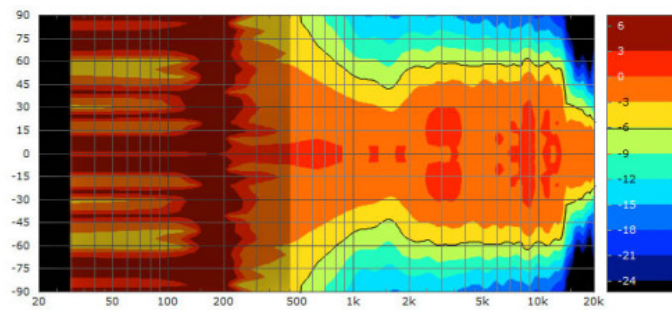
### B&C DE550 2,83V 1m



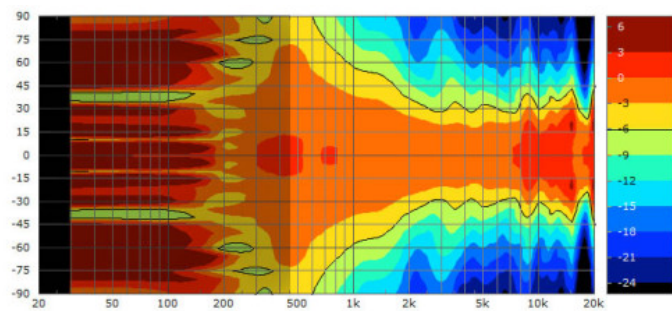
### B&C DE360 2,83V 1m



### B&C DH450/16Ω 4V 1m

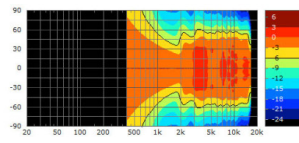


horizontal  
vertical

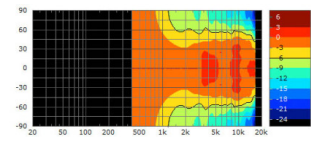


All measurements without cabinet or baffle 0.1 oct smoothed

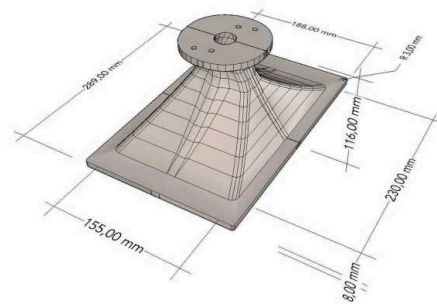
1120 simulation




...horizontal fullspace



...on infinite baffle



 [Druckversion](#) | [Sitemap](#)

[Login](#)