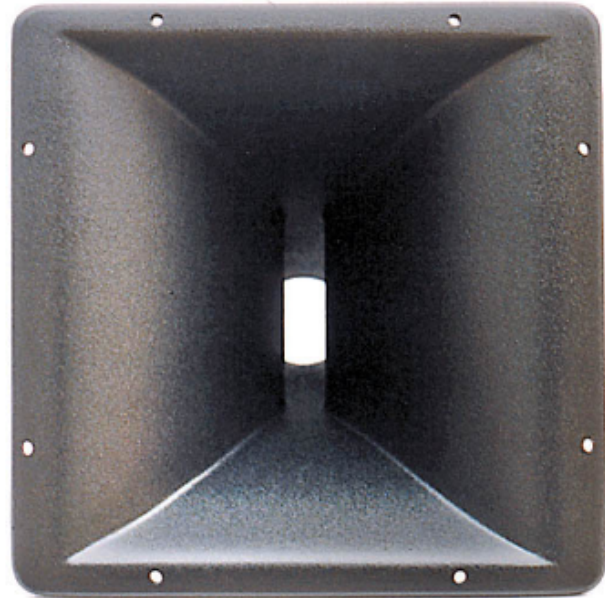


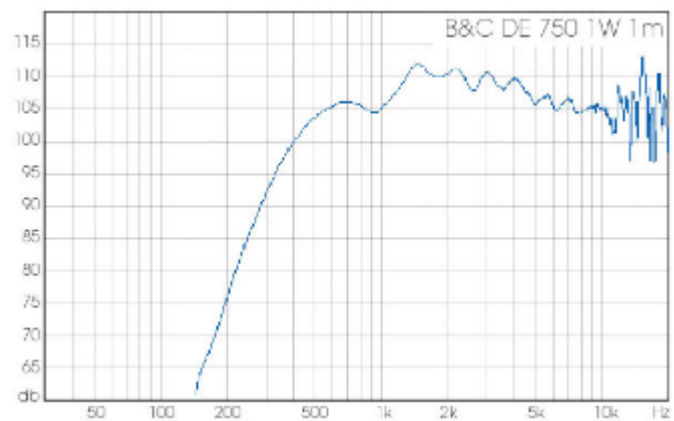


264

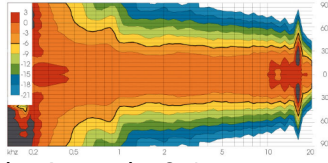


60° x 40° Constant directivity horn
available with **2"**, **1.5"** or **1.4"**-throat

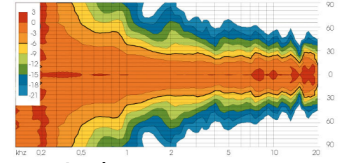
| | |
|----------------------------|--------------------|
| Material: | GFK / GRP |
| w x h x d: | 278 x 278 x 235 mm |
| 1.5", 1.4": | 278 x 278 x 245 mm |
| Einbaumaß / Baffle cutout: | 240 x 240 mm |



Sensitivity



horizontal 0.1 octave smoothing



vertical

 [Druckversion](#) | [Sitemap](#)

[Login](#)