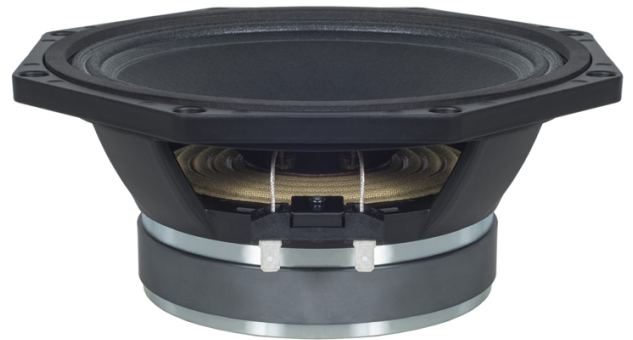


**8PS21** 8 Ω

Woofer

- 400 W continuous program power capacity
- 51 mm (2 in) copper voice coil
- 70 - 3000 Hz response
- 94 dB sensitivity
- Shorting copper cap for extended HF response



**8PS21 8 Ω**
**Woofers**
**SPECIFICATIONS**

|   |                        |
|---|------------------------|
| Nominal Diameter  | <b>200 mm (8 in)</b>   |
| Nominal Impedance   | <b>8 Ω</b>             |
| Minimum Impedance   | <b>7 Ω</b>             |
| Nominal Power Handling  | <b>200 W</b>           |
| 2 hours test made with continuous pink noise signal within the range Fs-10Fs. Power calculated on rated minimum impedance. Loudspeaker in free air. |                        |
| Continuous Power Handling   | <b>400 W</b>           |
| Power on Continuous Program is defined as 3 dB greater than the Nominal rating.   |                        |
| Sensitivity   | <b>94 dB</b>           |
| Applied RMS Voltage is set to 2.83 V for 8 ohms Nominal Impedance.  |                        |
| Frequency Range   | <b>70 Hz - 3000 Hz</b> |
| Voice Coil Diameter   | <b>51 mm (2 in)</b>    |
| Winding Material  | <b>Copper</b>          |
| Former Material   | <b>Kapton</b>          |
| Winding Depth   | <b>16 mm (0.62 in)</b> |
| Magnetic Gap Depth  | <b>8 mm (0.31 in)</b>  |
| Flux Density  | <b>1.1 T</b>           |
| Woofers Cone Treatment  | <b>None</b>            |

**PARAMETERS**

Thiele-Small parameters are measured after a high level 20 Hz sine wave preconditioning test.

|      |   |
|------|---|
| Fs   | <b>73 Hz</b>                                    |
| Re   | <b>5.4 Ω</b>                                    |
| Qes  | <b>0.36</b>                                     |
| Qms  | <b>4.2</b>                                      |
| Qts  | <b>0.33</b>                                     |
| Vas  | <b>14 dm<sup>3</sup> (0.49 ft<sup>3</sup>)</b>  |
| Sd   | <b>220 cm<sup>2</sup> (34.1 in<sup>2</sup>)</b> |
| η0   | <b>1.5 %</b>                                    |
| Xmax | <b>5 mm</b>                                     |
| Xvar | <b>4 mm</b>                                     |
| Mms  | <b>23 g</b>                                     |
| Bl   | <b>12.6 Tm</b>                                  |
| Le   | <b>0.5 mH</b>                                   |
| EBP  | <b>203 Hz</b>                                   |

**DESIGN**

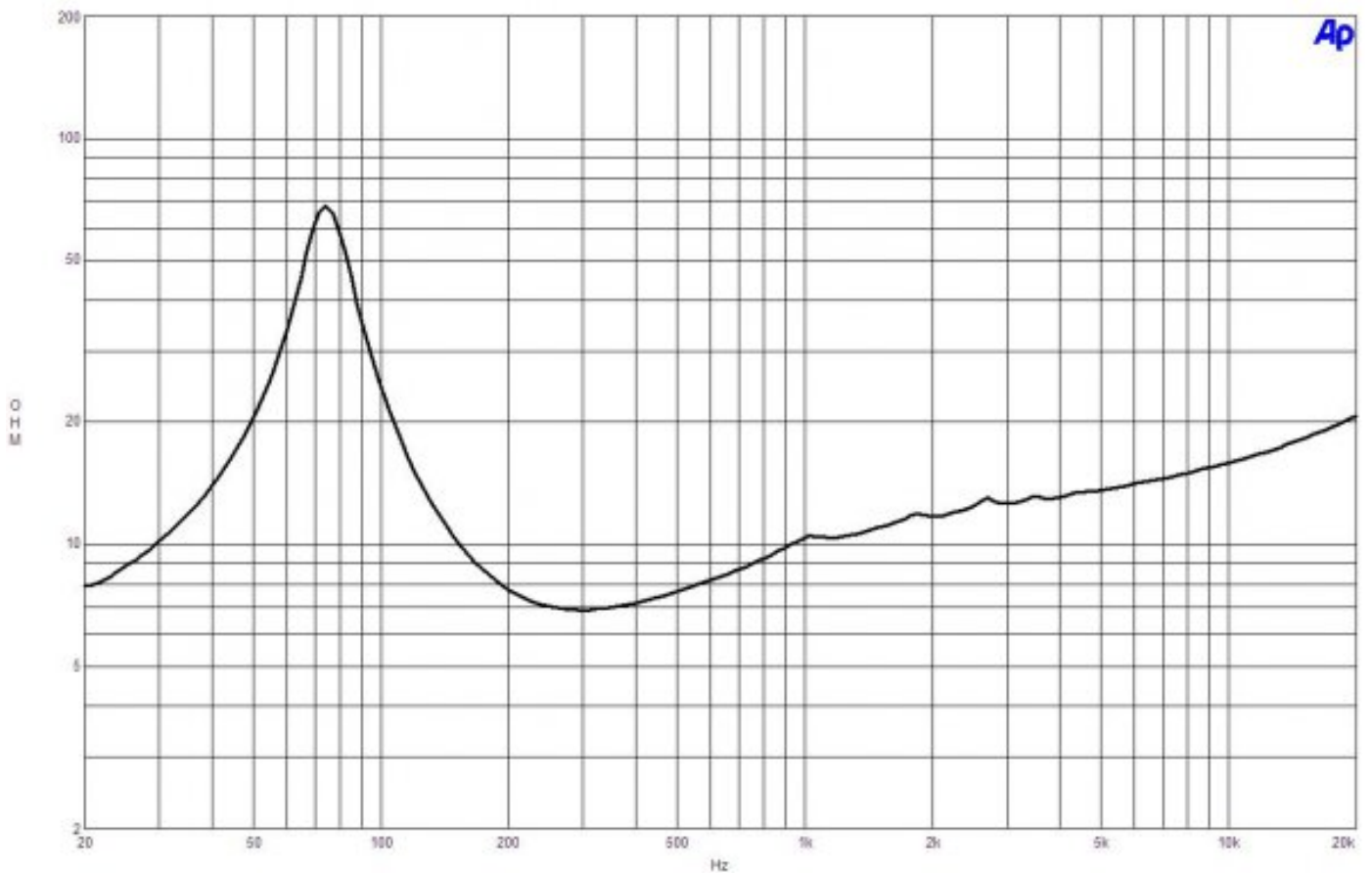
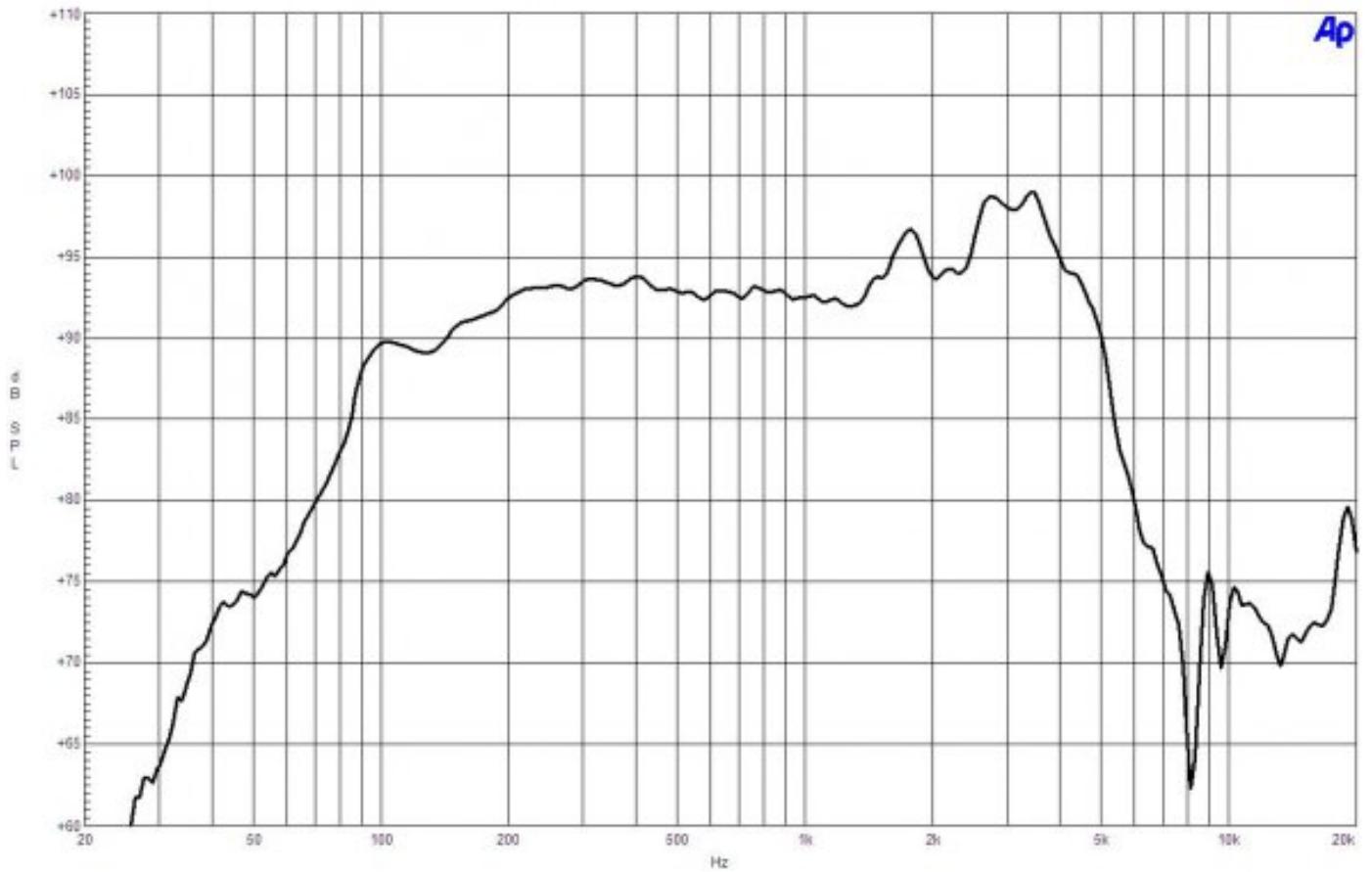
|                        |  |
|------------------------|--|
| Surround Shape         | <b>Double Roll</b>                             |
| Cone Shape             | <b>Exponential</b>                             |
| Magnet Material        | <b>Ferrite</b>                                 |
| Spider                 | <b>Single</b>                                  |
| Pole Design            | <b>T-Pole</b>                                  |
| Woofers Cone Treatment | <b>None</b>                                    |
| Recommended Enclosure  | <b>14 dm<sup>3</sup> (0.49 ft<sup>3</sup>)</b> |
| Recommended Tuning     | <b>73 Hz</b>                                   |

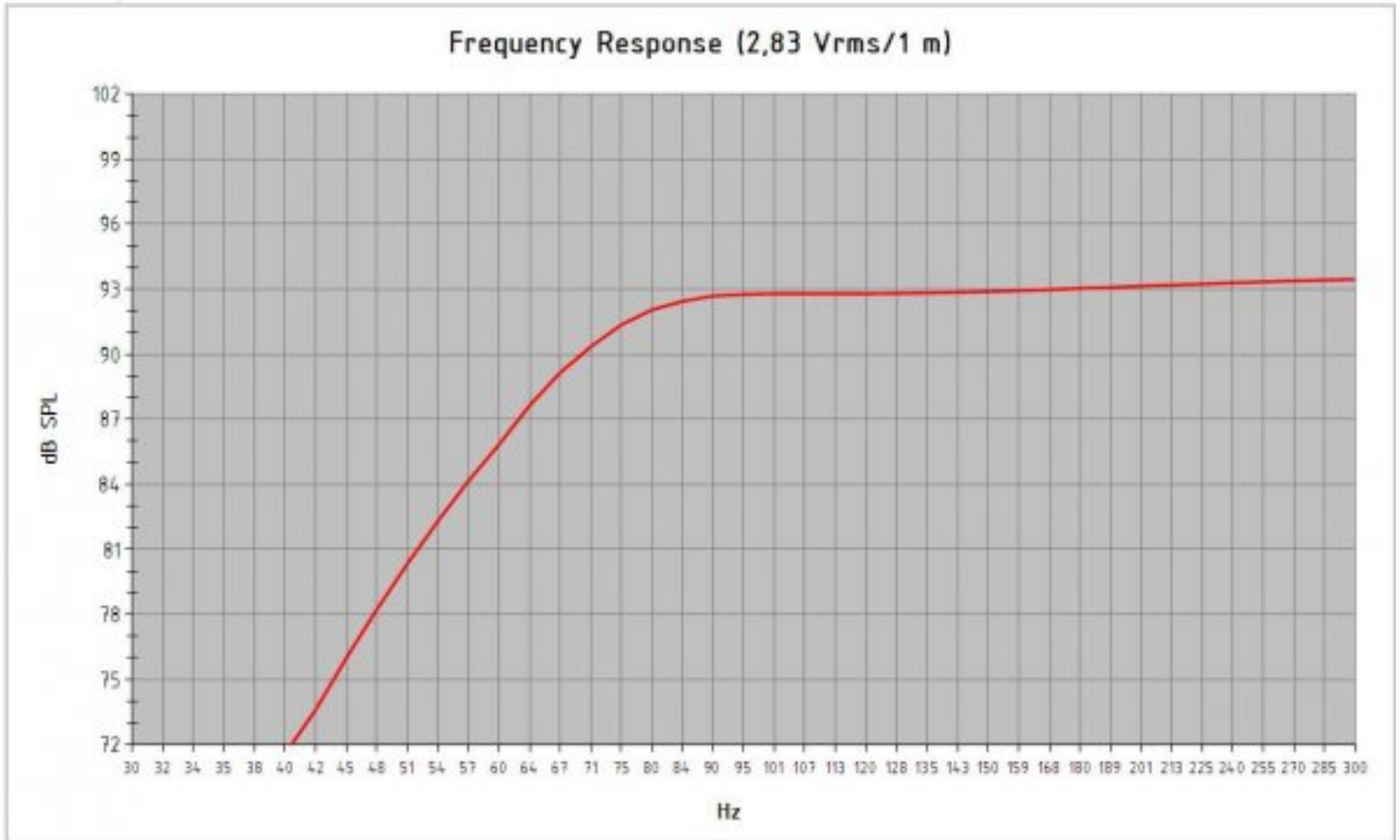
**MOUNTING AND SHIPPING INFO**

|                               |   |
|-------------------------------|---|
| Overall Diameter              | <b>225 mm (8.8 in)</b>                          |
| Bolt Circle Diameter          | <b>210 mm (8.3 in)</b>                          |
| Baffle Cutout Diameter        | <b>187 mm (7.4 in)</b>                          |
| Depth                         | <b>91 mm (3.6 in)</b>                           |
| Flange and Gasket Thickness   | <b>11 mm (0.4 in)</b>                           |
| Air Volume Occupied by Driver | <b>1.2 dm<sup>3</sup> (0.04 ft<sup>3</sup>)</b> |
| Net Weight                    | <b>3.3 kg (7.28 lb)</b>                         |
| Shipping Units                | <b>1 pcs</b>                                    |
| Shipping Weight               | <b>3.75 kg (8.27 lb)</b>                        |
| Shipping Box                  | <b>255x255x150 mm<br/>(10.04x10.04x5.91 in)</b> |

**SERVICE KITS**

|                |                    |
|----------------|--------------------|
| LF recone-kits | <b>RCK008PS218</b> |
|----------------|--------------------|





|   |                    |                          |   |
|---|--------------------|--------------------------|---|
| <i>Model:</i>   | <b>8 PS 21</b>     |                          |   |
| <i>Enclosure Type:</i>                                | <b>Bass Reflex</b> |                          |   |
| <i>Internal Net Volume (Liters):</i>                  | <b>14</b>          | <i>Port Area (cm²):</i>  | <b>32,2</b>                                       |
| <i>Tuning Frequency (Hz):</i>                         | <b>73</b>          | <i>Port Length (cm):</i> | <b>7,4</b>  |
| <i>Frequency (-3 dB) (Hz):</i>                        | <b>72,8</b>        |                          |   |
| <i>Excursion Limited Maximum SPL at 1 meter (dB):</i> | <b>110,6</b>       | equal to                 | <b>54,4</b> Watts <i>(Bass Band Power Rating)</i> |
| <i>Thermal Limited Maximum SPL at 1 meter (dB):</i>   | <b>116,3</b>       | equal to                 | <b>200,0</b> Watts <i>(Mid Band Power Rating)</i> |

