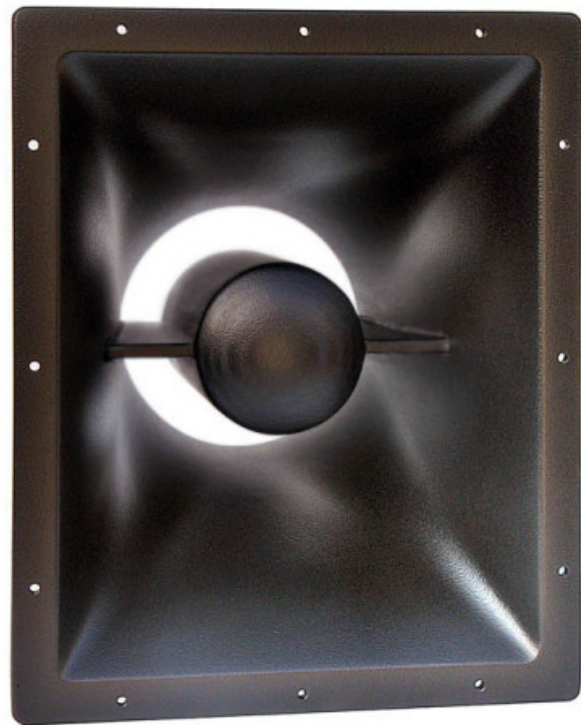




870



8" Midrange-horn for B&C driver 8NSM64 or RCF  
MR8N301

directivity: 70° x 55° at 1,6 kHz

size: 39 x 32 x 24 cm

weight: approx. 2.9 kg

displaced volume: 11 l

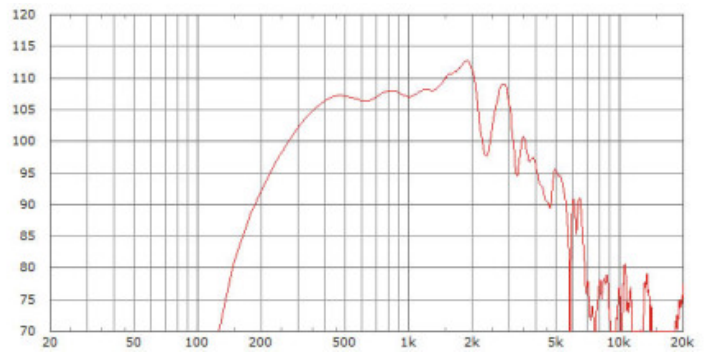
Material: high-strength glass fabric reinforced  
polyester;

plywood phase-plug-caps

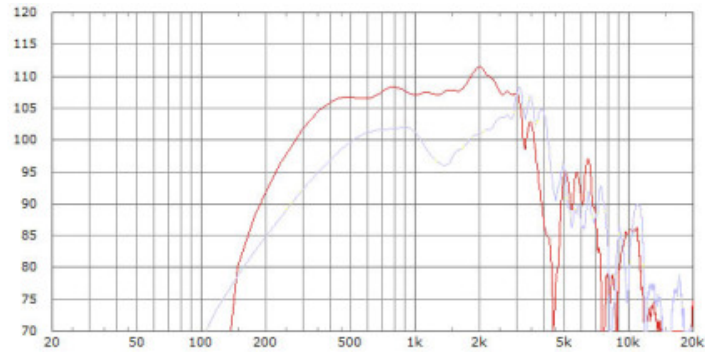
mounting: 6 M4-threads for B&C

4 M5-threads for RCF mounting

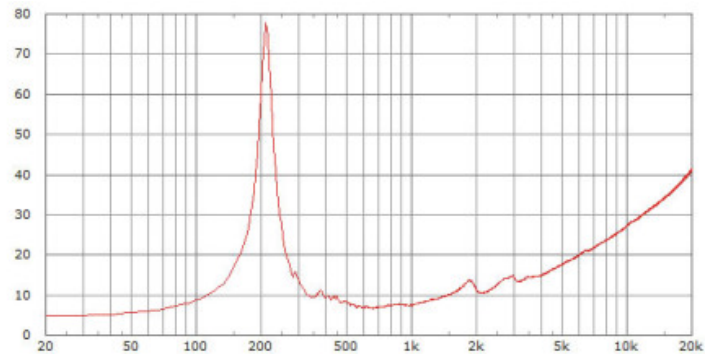
Limmerhorns - 870



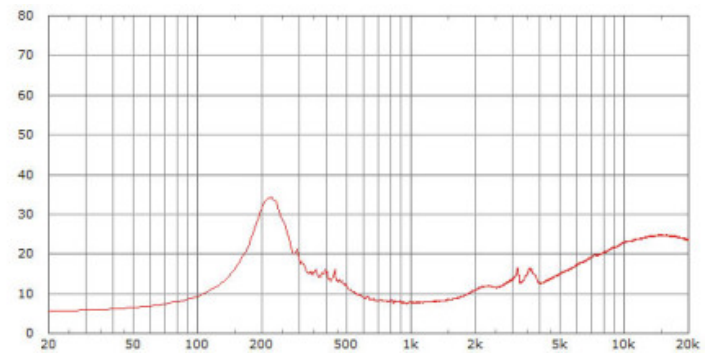
870b with B&C 8NSM64 2,83 V 1m



870r with RCF MR8N301 (red) 2,83 V 1m  
light blue: MR8N301 direct radiating on a baffle of  
39 x 32 cm

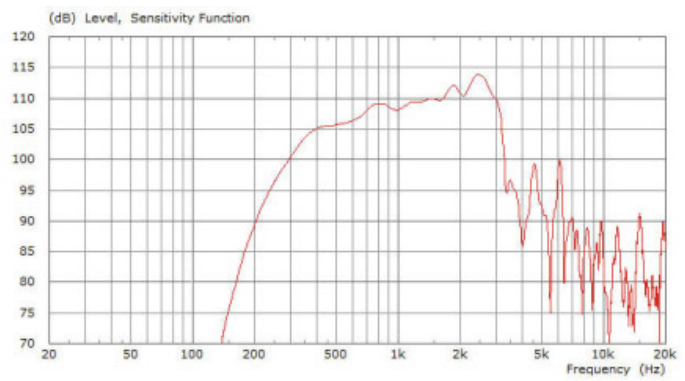


Impedance 870b 8NSM64

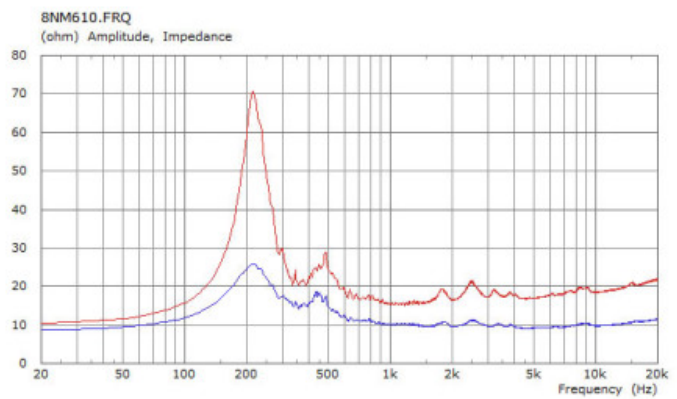


Impedance 870r MR8N301

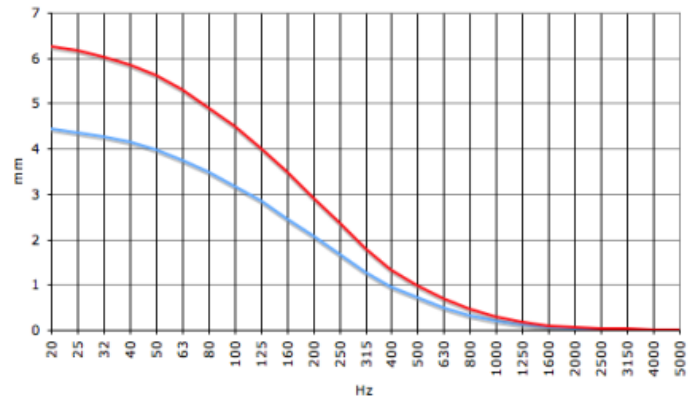
# 870s18



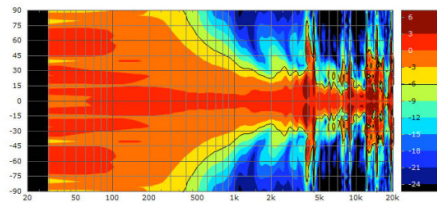
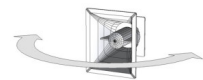
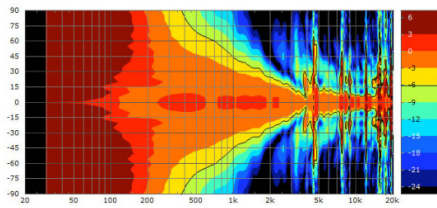
870s18 with 18Sound 8NM610 / 16 Ohm 4,0 V 1m



Impedance 870s18 8NM610 / 16 Ohm and 8NMA610

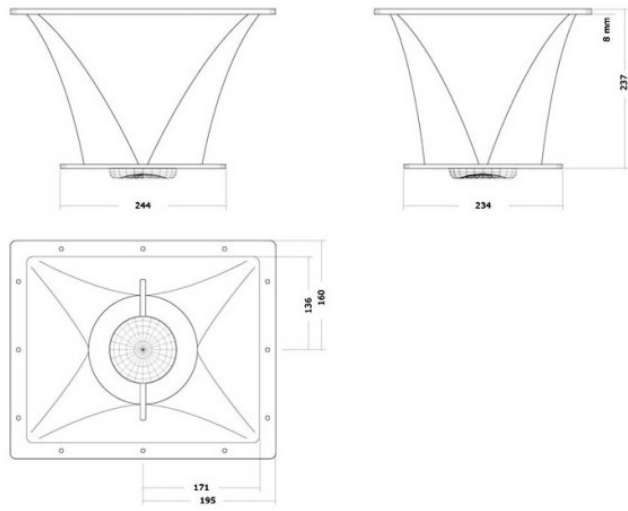


Calculated cone excursion at 500 and 1000 Watts



All measurements fullspace without cabinet or baffle, unless otherwise noted.

Limmerhorns - 870




The Gate Club  
Düsseldorf

8x Auditiv  
B215Ex 2x15"  
Subwoofer  
4x Auditiv  
T410H 4x10" /  
8" / 1,4"



Toppteile in 4-  
Punkt  
2x Auditiv T48H  
4x8" / 6,5" / 1"  
Toppteile als DJ  
Monitoring  
4x FP14000  
Endstufe für  
Bass  
3x FP10000Q  
Endstufe für  
Toppteile /  
Monitoring  
2x Linea  
Research  
ASC48F FIR DSP

1017

 [Druckversion](#) | [Sitemap](#)

[Login](#)