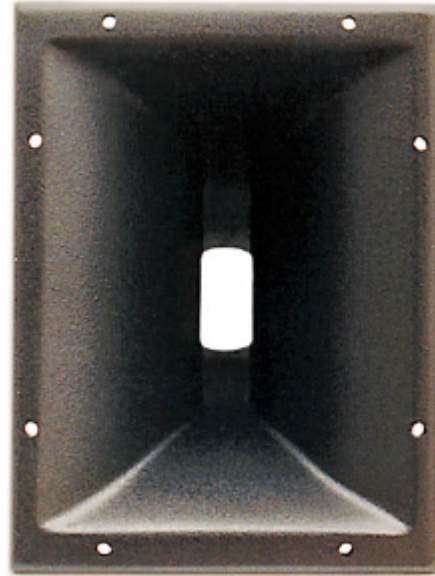


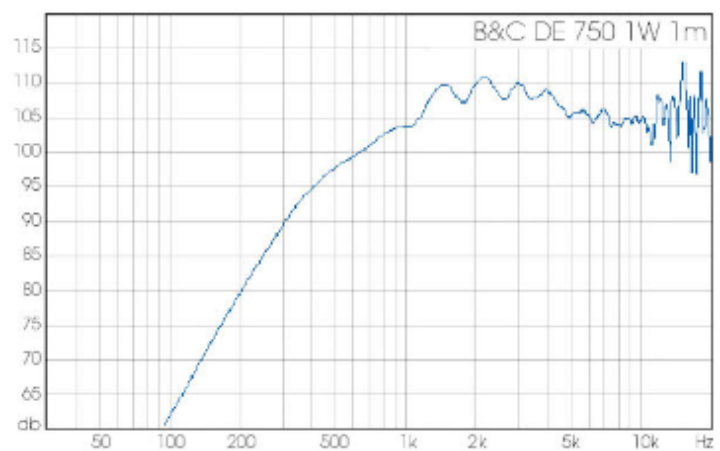


# 271

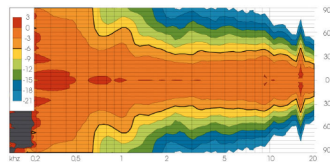


**75° x 45°** Constant directivity horn  
available with **2"**, **1.5"** or **1.4"**-throat

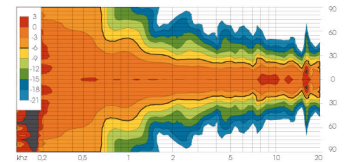
Material:	GFK / GRP
b x h x t / w x h x d:	180 x 240 x 190 mm
1.5", 1.4":	180 x 240 x 200 mm
Einbaumaß / Baffle cutout:	140 x 200 mm



Sensitivity



horizontal 0.1 octave  
smoothing



vertical

 [Druckversion](#) | [Sitemap](#)

[Login](#)